

ORCA - LARGE LED FLOODLIGHT

The Orca is one of the brightest industrial luminaires available worldwide. With an unmatched lumen output of more than 110.000 lumen, the Orca is a trustworthy powerhouse. This floodlight is often used in construction cranes, large excavation sites and industrial sites.

- High Performance LED's
- Integral temperature monitoring device
- Corrosion-resistant aluminum housing
- High thermal conductivity
- A number of electrical protections
- Vibration resistance
- Waterproof, IP69K
- Impact resistance, IK10



OR156 800AC

Power : 800W
 Light output : 111.300 lm
 Efficiency : 139 lm/W
 Voltage : 90-305VAC / 180-528VAC

OR156 800DC

Power : 800W
 Light output : 100.200 lm
 Efficiency : 125 lm/W
 Voltage : 24V (20-35V)

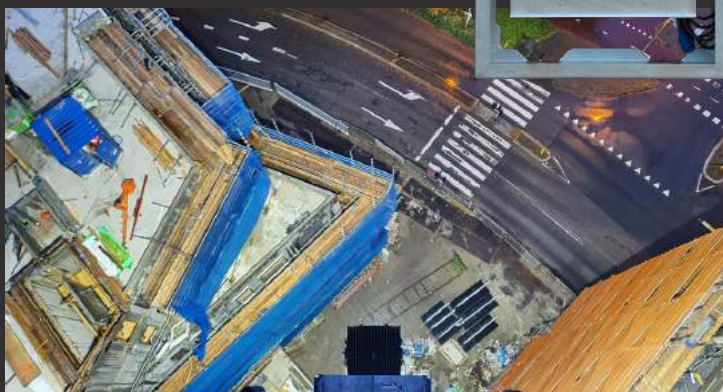
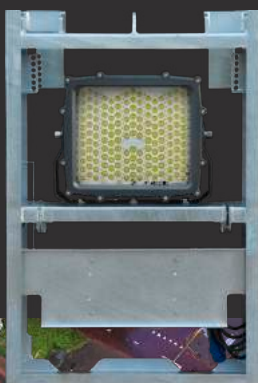
Construction Crane Bracket

The demand for this product came from the largest towercrane rental in the Netherlands. As their lighting partner we looked at the current situation and sought a simplified and universal way to mount and aim the lights. This resulted in the DCbright crane bracket. The bracket ensures that the lamps can be transported easily, hung in place quickly and have good light distribution at different heights.

Crane bracket specifications

Material	5 mm, hot dip galvanized steel
Bracket weight	52 kg
Bracket + lamp weight	82.6 kg
Warranty	5 years

Eight of these crane brackets fit together on a single euro pallet for transportation, fits with our power distribution unit.



Our Orca is often combined with our universal construction crane bracket

OR156 Specifications

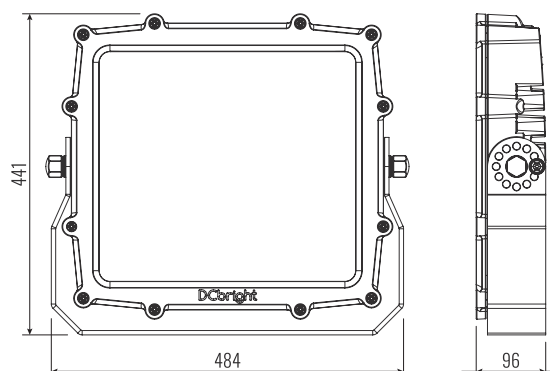
IP-rating : IP69K
 Expected life span : 145 000 hours, L80B10
 Light angle adjustment : +/- 240° in 30° steps

Weight and packaging

Lamp weight : 18.2 kg
 Bracket weight : 2.9 kg
 Gross weight : 22.7 kg
 Product dimension : 515 x 440 x 95 mm
 Packaging dimension : 570 x 505 x 165 mm

Available options

Light angles : 14° - 38° - 70° - 14x46°
 Light beam colour : 6500K - 4000K - 2700K - 2200K



ORCA - 316L STAINLESS STEEL

The Orca in 316L stainless steel is your choice if you are looking for the most powerful LED light source that offers superior corrosion resistance. This version of the Barracuda is ideal for use in environments where corrosion is most aggressive such as fishingships, liftvessels, chemical plants and various other marine and offshore applications.

- High Performance LED's
- Integral temperature monitoring device
- Corrosion-resistant 316L Stainless Steel housing
- High thermal conductivity
- A number of electrical protections
- Vibration resistance
- Waterproof, IP69K
- Impact resistance, IK10



OR156 800SS AC

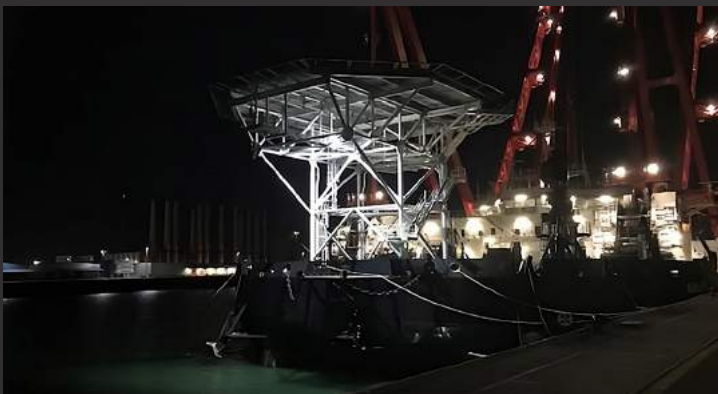
Power : 800W
 Light output : 111.300 lm
 Efficiency : 139 lm/W
 Voltage : 90-305VAC /
 180-528VAC

OR156 800SS DC

Power : 800W
 Light output : 100.200 lm
 Efficiency : 125 lm/W
 Voltage : 24V (20-35V)



Choosing the right optics ensures proper illumination of important area's



Various light colours allow for a brightly lit working environment at night

Orca Specifications

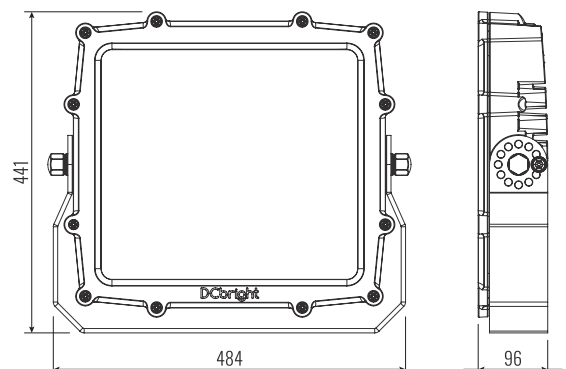
IP-rating : IP69K
 Expected life span : 145 000 hours, L80B10
 Light angle adjustment : +/- 240° in 30° steps

Weight and packaging

Lamp weight : 32.0 kg
 Bracket weight : 4.3 kg
 Gross weight : 36.3 kg
 Product dimension : 515 x 440 x 95 mm
 Packaging dimension : 570 x 505 x 165 mm

Available options

Light angles : 14° - 38° - 70° - 14x46°
 Light beam colour : 6500K - 4000K - 2700K - 2200K



ORCA - HIGH TEMPERATURE LED LIGHT

The Orca HT is the brightest industrial high temperature floodlight available worldwide. With an unmatched lumen output of more than 55,000 lumen, the Orca is a trustworthy powerhouse. This floodlight is often used in steel plants and high heat production facility halls.

- High Performance LED's
- Integral temperature monitoring device
- Corrosion-resistant aluminum housing
- High thermal conductivity
- A number of electrical protections
- Vibration resistance
- Waterproof, IP69K
- Impact resistance, IK09



OR156 240HT

Power : 240W
 Light output : 55.000 lm
 Efficiency : 230 lm/W
 Voltage : 90-305VAC

OR156 240HT OP

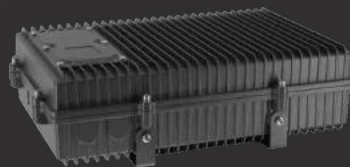
Power : 240W
 Light output : 39.000 lm
 Efficiency : 162 lm/W
 Voltage : 90-305VAC

High Temperature requires special preparations

When applying the high temperature models to installations in an high heat environment it is important to note that the life longevity of the installation is determined by the lifecycle of its weakest link. In case of led powered lights this is the driver unit. We therefor advise the use of external driverboxes which protect these drivers and provide the possibility to mount it externally. For full life longevity and warranty coverage the drivercomponent needs to be installed in an environment not exceeding +50°C.

Compatible OR156 Driverbox

IP-Rating	IP68
Max. temperature	50°C
Life expectancy	100.000 hours
Warranty	5 years



Light comes with a 15m cable that separates lamp from its driver.



Our OR156HT OP is capable of handling high amounts of infrared radiation

OR156 HT Specifications

Temperature range : -45°C to +120°C
 IP-rating : IP69K
 Impact-rating : IK09
 Light angle adjustment : +/- 240° in 30° steps

Weight and packaging

Lamp weight : 18.2 kg
 Bracket weight : 2.9 kg
 Gross weight : 22.7 kg
 Product dimension : 515 x 440 x 95 mm
 Packaging dimension : 570 x 505 x 165 mm

Available options

Light angles : 120° | OP: 60° - 40° - 20°
 Light beam colour : 6500K (Other colors on request)

