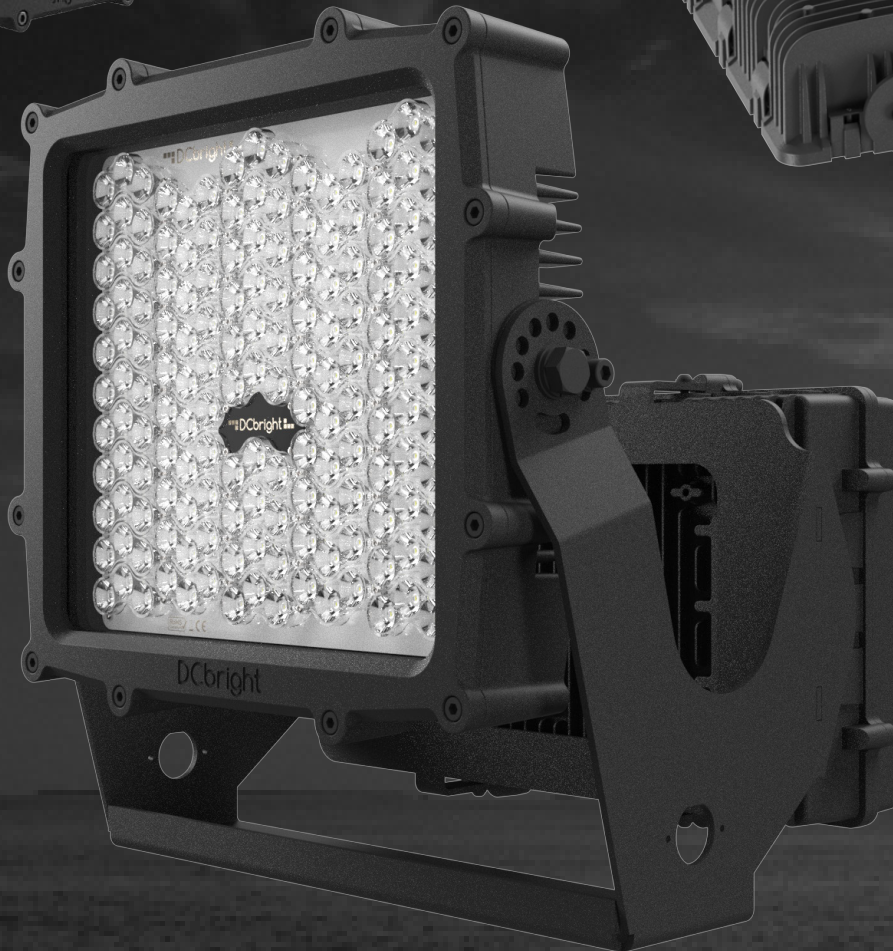
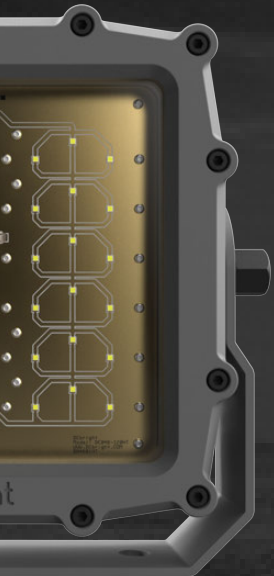
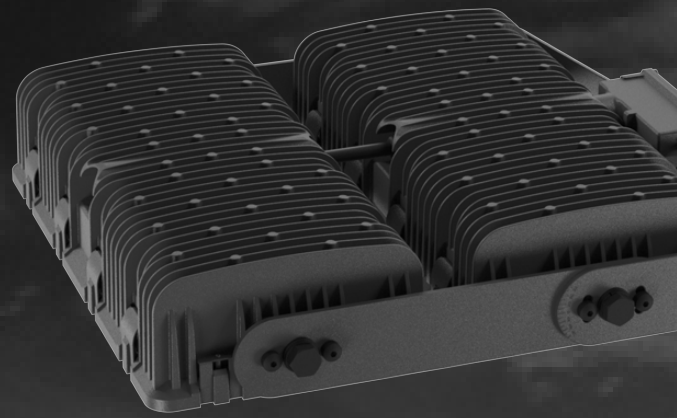


THE WORLD'S HIGHEST PERFORMING
INDUSTRIAL LED LIGHTS



MINING

CONSTRUCTION

INDUSTRIAL

MARITIME

DCbright Dark Light

Glare-free Area Lighting 10.300 - 12.800 lm

Patented reflector technology

Dark Light S & D-series: Efficient, Glare-Free Illumination.

The Dark Light S & D-Series offers precise, glare-free lighting with high-efficiency LEDs delivering up to 32,200 lumens. Designed for versatility, these fixtures feature adjustable forward throw (63° to 75°) and customizable light distribution, making them ideal for various applications. Built with durable, corrosion-resistant stainless steel, they provide reliable performance and energy savings, reducing maintenance costs. Perfect for industrial, commercial, and outdoor spaces, the Dark Light S & D-Series ensures long-lasting, efficient illumination in any environment.



Dark Light S & D-seriesL Common Specifications SS=Stainless Steel

Size	Weight	Ingress / Impact Protection	Lumen Maintenance	Optical Distribution
DL-S: 260 mm x 200 mm x 130 mm 10 in x 7.9 in x 5.1 in	DL-S: 2.3 kg / 5.1 lb	DL-S: IP69, IK08	345,000 hr, LM70	Asymmetrical, w/field-adjustable cut-off
Operating Temperature	Color Consistency	CCT	Fixture Adjustment	Limited Warranty
-40°C / -40°F < 50°C / 122°F	< 3-Step McAdams Ellipse	Standard: 4000K Optional: 1700 - 5700K	±20°, stepless	S-series: 3-5 years
Cable / Remote Driver	CRI	Dimming	Optical Adjustment	
2 m PUR	Standard: 70 Optional: 80, 90	Std. 0-10; Optional DALI	63° - 75° Full cut-off	

Dark Light S-series Light and Power Specifications SS=Stainless Steel

Model Number	Lumens	Efficacy @ 4000K/5700K CCT	Power (Watts)	Voltage	Driver
Dark Light S60-75					
DL-S-60DC-24V	10.300	171	60	24 Vdc	Internal
DL-S-60DC-12-24V	10.300	171	60	12-24 Vdc	Internal
DL-S-60DC-24V-SS	10.300	171	60	24 Vdc	Internal
DL-S-75DC-24V	12,800	171	75	24 Vdc	Internal
DL-S-75DC-24V-SS	12,800	171	75	24 Vdc	Internal
DL-S-75AC	12,800	171	75	90-305 Vac/127-420 Vdc	Remote
DL-S-75AC-SS	12,800	171	75	90-305 Vac/127-420 Vdc	Remote

¹ Dual color available
(1700-5700K)

DCbright Dark Light

Glare-free Area Lighting 4.800 - 51.300 lm

Patented reflector technology



Dark Light M-series: Innovative Lighting with Maximum Efficiency.

The Dark Light M-series is engineered to provide uniform, glare-free illumination with virtually no Glare and light spill. Featuring advanced LED technology and an optimized reflector design, these lights deliver up to 171 lumens per watt for greater energy efficiency and reduced operating costs. With a customizable forward throw range of 63° to 75° and adjustable light distribution, these lights are ideal for a variety of applications, offering tailored lighting solutions for every need. The high-performance LEDs and robust parabolic reflector modules ensure improved visibility, making the Dark Light M-series the perfect choice for demanding environments. With an IP69 and IK08 rating, these lights are built to withstand harsh conditions, providing long-lasting performance and durability.



Dark Light M-series: Common Specifications

Size	Weight	Color Consistency	CCT	Optical Distribution
DL-M-30: 170 mm x 120 mm x 70 mm 6.7 in x 4.7 in x 2.8 in	DL-M-30: 1 kg / 2.2 lb DL-M-150: 3.6 kg / 7.9 lb DL-M-300: 5.5 kg / 12.1 lb	< 3-Step McAdams Ellipse	Standard: 4000K Optional: 1700 - 5700K	Asymmetrical, w/field-adjustable cut-off
DL-M-150: 250 mm x 230 mm x 140 mm 9.8 in x 9.1 in x 5.5 in	Operating Temperature -40°C / -40°F < 50°C / 122°F	CRI Standard: 70 Optional: 80, 90	Dimming Std. 0-10; Optional DALI	Fixture Adjustment Fixed
DL-M-300: 370 mm x 230 mm x 150 mm 14.6 in x 9.1 in x 5.9 in	Ingress / Impact Protection DL-M-series: IP69, IK08	Lumen Maintenance 345,000 hr, LM70	Optical Adjustment 63° - 75° Full cut-off	Limited Warranty DL-M-series: 3-5 years

Dark Light M-series: Light and Power Specifications

Model Number	Lumens	Efficacy @ 4000K/5700K CCT	Power (Watts)	Voltage	Driver
Dark Light M-30					
DL-M-30DC-24V ^{1 2}	4,800	160	30	24 Vdc	Internal
DL-M-30DC-12-36V ^{1 2}	4,800	160	30	12-36 Vdc	Internal
Dark Light M-150					
DL-M-150DC-24V ^{1 2}	25,700	171	150	24 Vdc	Internal
DL-M-150AC	25,700	171	150	90 - 305 Vac / 127 - 420 Vac	Remote
Dark Light M-300					
DL-M-300DC-24V ^{1 2}	51,300	171	300	24 Vdc	Internal
DL-M-300AC	51,300	171	300	90 - 305 Vac / 127 - 420 Vac	Remote

¹ Dual color available
(1700-5700K)

² Marine version available



PRODUCTS

SUSTAINABLE | LIGHTING | SOLUTIONS



Dutch Engineered, and built with passion

JEL Products

info@jelproducts.nl
www.jelproducts.nl

Sustainable | Lighting | Solutions