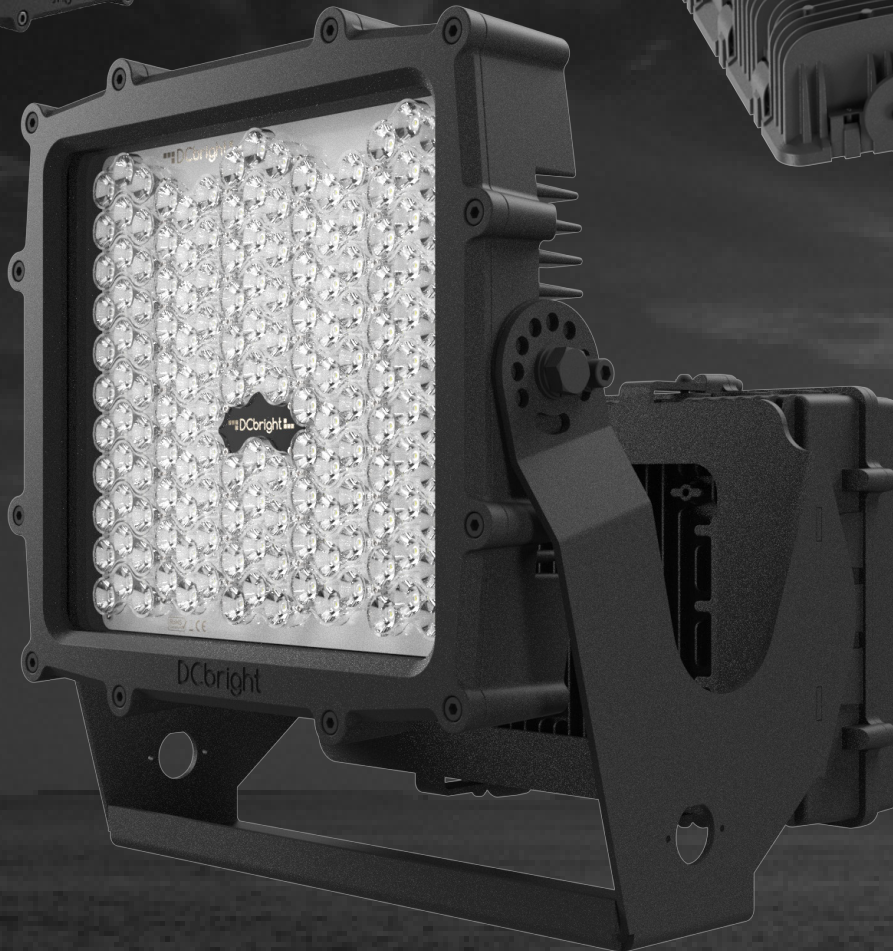
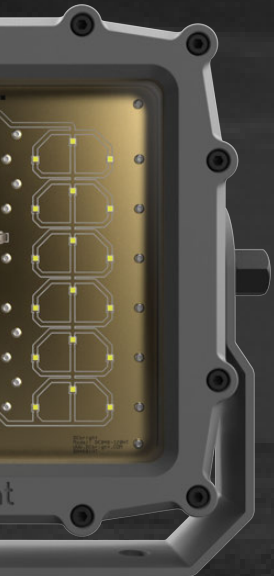
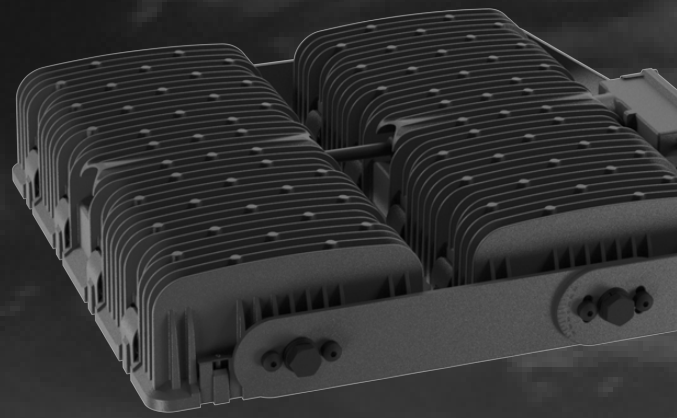


THE WORLD'S HIGHEST PERFORMING  
**INDUSTRIAL LED LIGHTS**



MINING

CONSTRUCTION

INDUSTRIAL

MARITIME

# Shark

Spotlighting 44.600 - 50.000 lm



## Maximum Power. Versatile Performance.

The Shark Series is engineered for high-performance lighting in demanding environments. With output options up to 50,000 lm and a robust design, Shark offers exceptional illumination while ensuring reliability in extreme conditions. Featuring advanced IP69K and IK10 ingress protection, the Shark Series is perfect for tough industrial applications, capable of withstanding harsh temperatures ranging from -40°C to 50°C. The fixture's adjustable design ensures optimal light distribution, with a long lifespan of 345,000 hours. Available in multiple configurations, including dual-color and a range of optics, the Shark is your go-to solution for reliable, energy-efficient lighting.

## DCbright Shark – Uncompromising Strength. Unmatched Performance.



SH-66-320AC  
SH-66-320DC-24V  
SH-66-320DC-60V

44,600 - 50,000 lm

## Shark: Common Specifications NOP=No Optics

### Size

335 mm x 349 mm x 88 mm  
13.2 in x 13.7 in x 3.5 in

### Weight

Standard Aluminum:  
9.2 kg / 20.3 lb

### Operating Temperature

Standard:  
-40°C / -40°F < 50°C / 122°F

### Cable / Remote Driver

Standard: 2 m PUR

### Ingress / Impact Protection

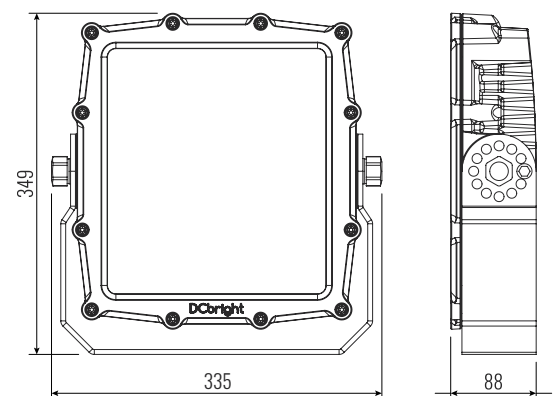
IP69K, IK10

### Fixture Adjustment

±240°, 30° steps

### Lumen Maintenance

345,000 hr, LM70\*



\* Specifications differ per product.

## Shark: Light and Power Specifications NOP=No Optics

Model	Lumens (6500K CCT)	Lm/W (100%)	Power (Watts)	Voltage	Optics	CCT	Limited Warranty
SH-120-240AC-NOP	47,500	198	240	90-305 Vac	120°	5000K <sup>3</sup>	3 year
SH-66-320AC <sup>1 2 4</sup>	50,000	156	320	90-305 Vac	14°, 38°, 70°, 14x46°	5000K <sup>3</sup>	3 year
SH-66-320DC-24V <sup>1 2 4</sup>	44,600	144	320	24 Vdc	14°, 38°, 70°, 14x46°	5000K <sup>3</sup>	3 year
SH-66-320DC-60V <sup>4</sup>	44,600	144	320	60 Vdc	14°, 38°, 70°, 14x46°	5000K <sup>3</sup>	3 year

<sup>1</sup> Rear mounted bracket available

<sup>2</sup> Dual color available  
(2200-6500K)

<sup>3</sup> Optional: 1800-6500K

<sup>4</sup> Marine version available



# PRODUCTS

SUSTAINABLE | LIGHTING | SOLUTIONS



**Dutch Engineered, and built with passion**

**JEL Products**

info@jelproducts.nl  
www.jelproducts.nl

**Sustainable | Lighting | Solutions**