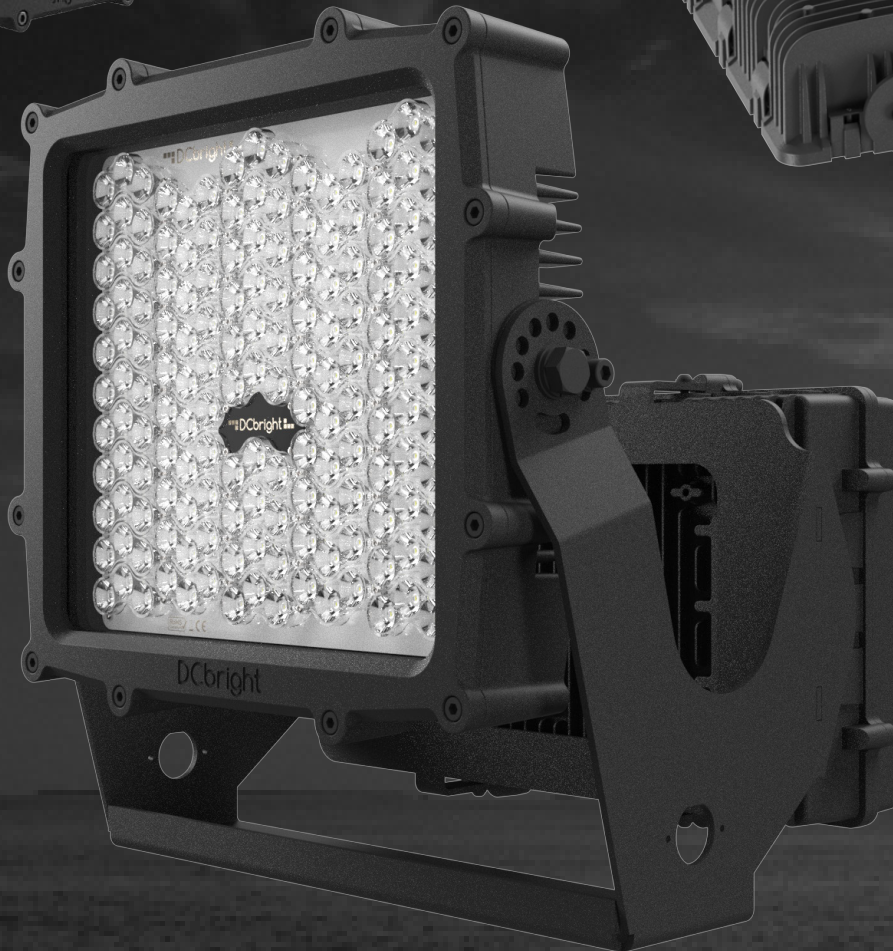
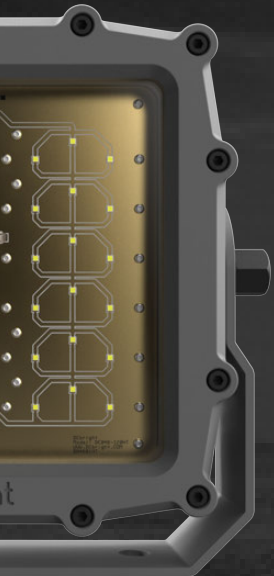
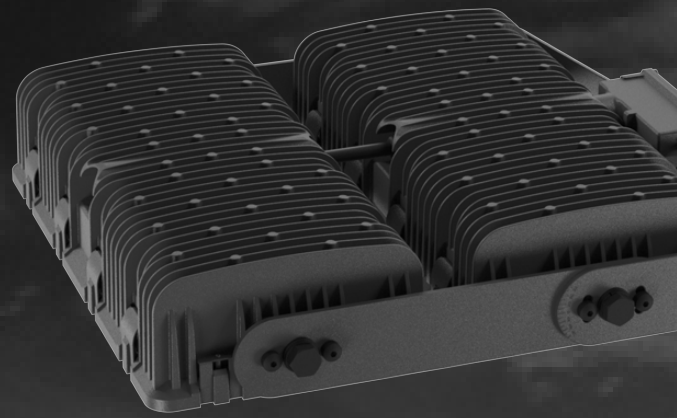


THE WORLD'S HIGHEST PERFORMING
INDUSTRIAL LED LIGHTS



MINING

CONSTRUCTION

INDUSTRIAL

MARITIME

Snapper HC

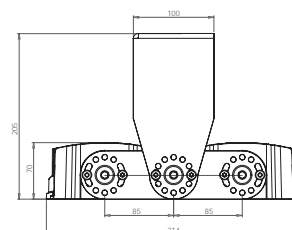
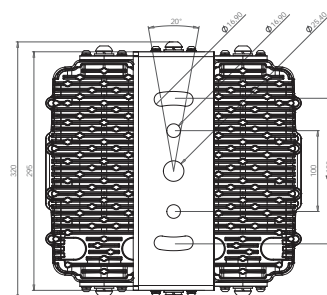
Spotlighting 49.500 – 83.000 lm



Industrial Power. Unyielding Reliability.

The Snapper HC Series is built for high-intensity lighting in heavy-duty industrial applications, including harbor cranes. With outputs ranging from 49,000 to 83,000 lumens, Snapper HC delivers exceptional performance under the harshest conditions. Designed with IP67 and IK08 protection, it is resilient to dust, water, and impact, operating flawlessly in temperatures up to 122°F (50°C). Featuring precise $\pm 240^\circ$ adjustment and a wide range of optics, Snapper HC ensures powerful and customized lighting for your demanding operations.

DCbright Snapper HC – Engineered for Harbour Cranes.



Snapper HC: Common Specifications

Size & Weight

Snapper HC x2:
320 mm x 314 mm x 205 mm
12.6 in x 12.4 in x 9.9 in
9.9 kg / 21.8 lb

Snapper HC x3:
320 mm x 484 mm x 205 mm
12.6 in x 19.1 in x 9.9 in
12.6 kg / 27.8 lb

Operating Temperature

Standard:
-40°C / -40°F < 50°C / 122°F

Cable / Remote Driver

Standard / SS: 2 m PUR

Ingress / Impact Protection

IP67, IK08

Fixture Adjustment

$\pm 180^\circ$, 30° steps

Lumen Maintenance

Standard:
345,000 hr, LM70

* Specifications differ per product.

Snapper HC: Light and Power Specifications

Model	Lumens (5000K CCT)	Lm/W (100%)	Power (Watts)	Voltage	Optics	CCT	Limited Warranty
SNx2-48-320AC-HC ¹	55,000	166	320	90-305 Vac	100s of options	5000K ²	3 year
SET 2xSNx2-48-320AC-HC	110,000	166	320	90-305 Vac	100s of options	5000K ²	3 year
SNx2-48-300DC-HC	44,100	147	300	24 Vdc	100s of options	5000K ²	3 year
SNx3-48-400/500AC-HC ¹	73,000	183	400	90-305 Vac	100s of options	5000K ²	3 year
SET SNx3-48-400/500AC-HC	146,000	183	400	90-305 Vac	100s of options	5000K ²	3 year
SNx3-48-450DC-HC	66,200	147	450	24 Vdc	100s of options	5000K ²	3 year

¹ Dual color available
(2200-6500K)

² Optional: 1700-5700K



PRODUCTS

SUSTAINABLE | LIGHTING | SOLUTIONS



Dutch Engineered, and built with passion

JEL Products

info@jelproducts.nl
www.jelproducts.nl

Sustainable | Lighting | Solutions